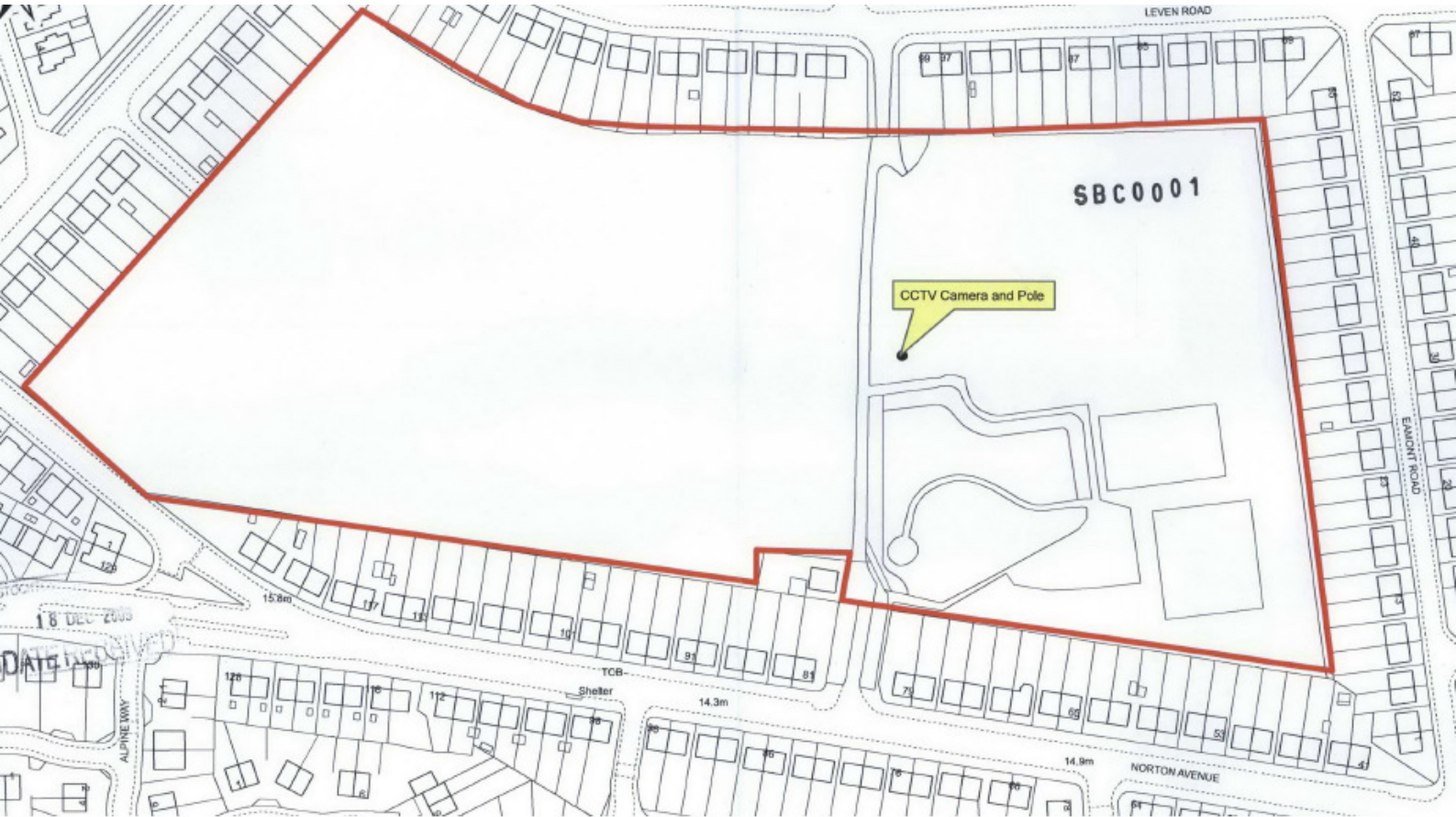
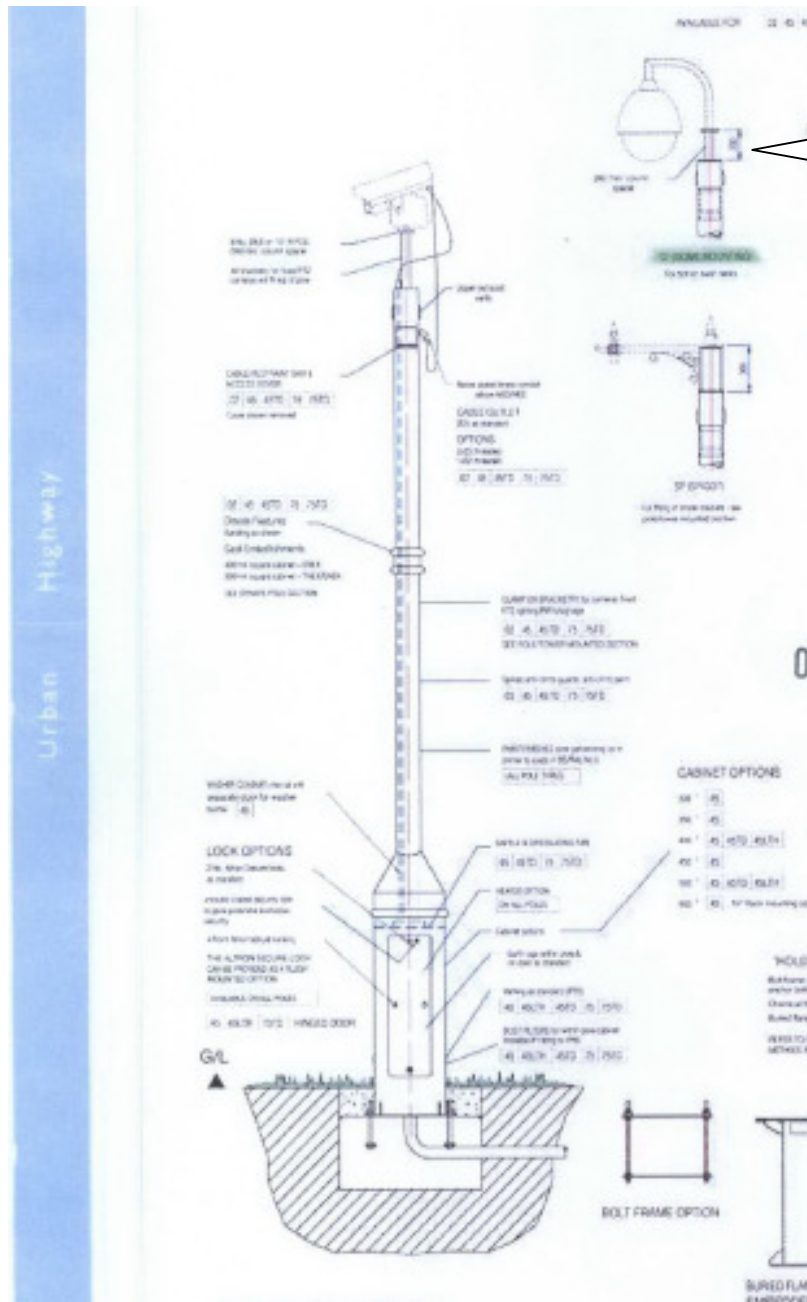


09/3055/LA Appendices
Installation of 1 CCTV camera on a 15m high pole, Blue Hall Recreation
Ground.

1. SBC0001; Location Plan



2. SBC0002 Proposed elevation of 15m high pole and chosen 'head' option



Chosen 'Head' option

Site photos of location of the proposed CCTV camera and 15m high pole

View from south to north. Proposal located half way up footpath to east



Location of proposed development, view from west to east

